

A HANDS-ON COURSE

FIBREDONTICS (2)

A Cost-effective treatment option in the current economic climate

Fibredontics will provide excellent aesthetic results and will stimulate your interest in dentistry a fresh.

Dr Jansie van Rensburg



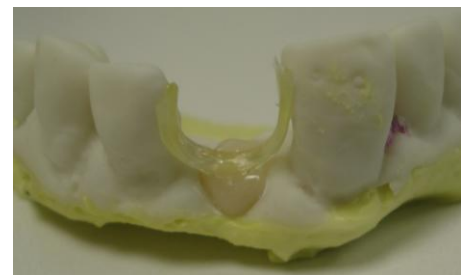
Dr Van Rensburg lectured at numerous International and National Dental Congresses, Study Group Meetings, BDA (British Dental Association) meetings and post graduate centers throughout the UK and Europe (including Germany, Norway, Finland, Poland and Spain). He published a number of articles including a peer review article published in the SADJ (South African Dental Journal), February 2005, on Fibre Reinforced Composite Restorations. As reflected by the feed back forms completed by the delegates who attended these courses the training sessions are very popular and more than 1000 dentists have already been trained on the hands-on courses, throughout South Africa, the UK and Europe in the different applications of fibre reinforced composites.

Aims & Objectives

The object of this course is to provide dentists the knowledge and practical skills to offer patients a range of exciting, technologically advanced treatment options. The techniques to be taught are minimally invasive, metal-free, aesthetically pleasing and patient-friendly. They are, moreover, highly cost-effective which is something of increasing importance in the current climate

Great emphasis will be placed on the hands-on element of the course and through their handling of the fibres delegates will obtain the confidence and skills they need to use fibre technology to:

1. -effectively treat the periodontally hopeless tooth using the extracted tooth as a pontic
2. -construct a bridge using a two-stage semi-indirect technique
3. -construct a durable and aesthetic fibre-reinforced indirect composite crown



Comment by previous delegate: "Clear, concise, practical advice which I could put to use straight away."

PLACES ARE STRICTLY LIMITED TO 8. Book early to prevent disappointment (see booking form)

Programme:

The course will comprise the following sections:

08h45: Registration, refreshments and exhibition

09h00: Introduction

In this section we shall cover –

- History and development of fibre dentistry
- An overview of the many applications of fibres in modern dentistry
- The splinting of mobile, periodontally involved teeth

The remainder of the course is divided into three modules, each dealing specifically with one of the applications outlined above. The modules will be comprised of an introductory lecture, a practical demonstration and a hands-on element

09h45: Module 1: (Splinting an extracted tooth into the arch)

- **Lecture:** Step by step instructions of the technique will be given with emphasis placed on how the extracted tooth and how to obtain the most aesthetically pleasing result. Real-life clinical cases will be presented to illustrate the technique
- **Demonstration:** The technique will be demonstrated using a tooth splinted into place on a pop model.
- **Hands-on session:** Delegates will practice the same splinting technique themselves

11h15: Tea/Coffee

11h45: Module 2: (The semi-direct partially constructed pontic)

- **Lecture:** During this lecture we shall cover several topics including design principles, the different fibre frame designs and how to construct a pontic. A basic composite layering technique to guarantee a successful end result will be taught.
- **Demonstration:** Two models will be used, one representing the patient and the other the pop (Plaster of Paris working model) model. The pontic will be partially constructed on the pop model together with a 'U' fibre before being transferred to the 'mouth' to be completed
- **Hands-on session:** Delegates will practice constructing their own semi-indirect composite bridge.

13h00: Lunch

14h00: Module 3: (The fibre reinforced, **indirect**, composite restorations)

- **Lecture:** The indirect laboratory restorations (crowns and bridges) are discussed in detail. Step by step the delegates will be shown how the fibre reinforced composite crown is constructed . Cementation of the indirect restorations with a dual cure resin cement is also covered in this lecture.
- **Demonstration:** Constructions of the the fibre reinforced composite crown
- **Hands-on session:** Experience the satisfaction when building up your own FRC crown on a sectional POP model.

15h15: Tea/Coffee (10 Min) (during module 3)

16h30: Conclusion Lecture covering:

- Useful tips regarding the everStick Fibres
- A summary of important facts about the fibres
- Information on what and where to order

17h00: End

Booking Form: Fibredontics 2

Date: (visit www.fibrebond.co.uk for different dates)

Time: 09h00- 17h00

Venue: Holiday Inn, Oxford Circus

57 - 59 Welbeck Street

London. W1G 9BL

(Close to the BDA HQ, London)

The fee per delegate is **£220.00** (£95.00 for auxiliary staff) and includes:

- All refreshments and buffet lunch
- **Training manual and comprehensive CD**
- All materials and instruments for the use during the course
(Sponsored by **FibreBond Ltd.**, **Sticktech Ltd** and **GCUK Ltd.**)
- **6 hours CPD Certificate**

Please bring along your own composite curing light!!!!

Please **reserve** my place(s) on the **Fibre Reinforced Composite Hands-On-Course 2**

Applicant's Name:1..... Title:.....

2..... Title:.....

Address:.....

.....

Postcode:.....Tel no:.....Fax no:.....

Email:.....

I enclose a cheque made payable to Fibre Bond Ltd. for £.....

Signed:.....Date:.....

Please return Booking Form and cheque to:

Fibre Bond Ltd.

6 Sandrock Park
Hastings
East Sussex
TN34 2RQ

BACS:

NatWest Bank
Acc No: 59518057
Sort Code: 60-02-07

Email: fibrebond@tiscali.co.uk

Tel no: 01424 755238

Mobile: 07783347423

To book online: www.fibrebond.co.uk

